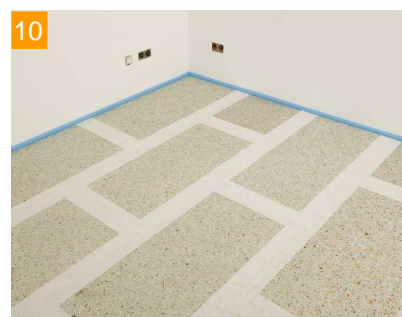
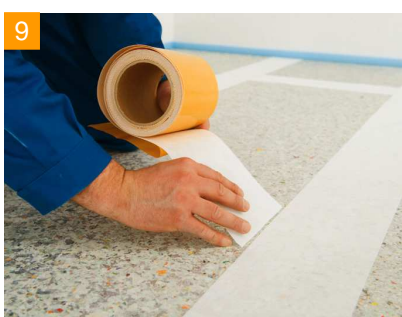
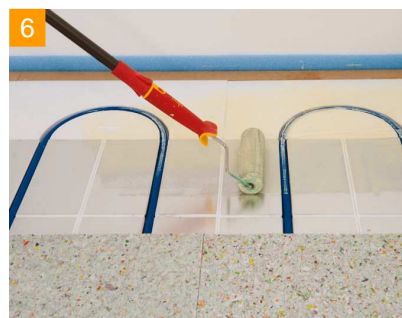
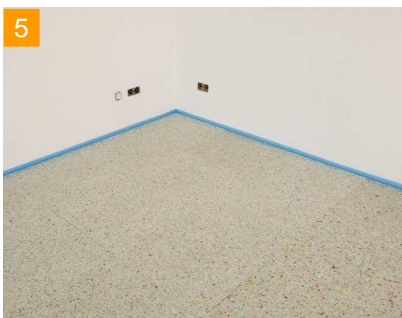


StrongBoard FL – In conjunction with System IDEAL EPS Installation Guide Part 1



- 1 StrongBoard FL can be installed as a floating load bearing surface on flat and level Jupiter Heating elements.
- 2 Cutting StrongBoard can be achieved with a circular saw. Final cuts should be used at the beginning of next row.
- 3 Continue to install the StrongBoard sheets in brick bond format. Endeavour to use complete panels at the perimeter.
- 4 If the final row is narrower, swap them for the last full row before. This ensures that the row of panels along the wall are complete.
- 5 It is important to ensure that there is no air gap either under the JUPITER heating elements or between the StrongBoard panels and heating elements.
- 6 Where air gaps can present a problem it is recommended that the StrongBoard is adhered. For this we recommend Mapei Ultrabond ECO FIX. Note: It is recommended that StrongBoard is always glued down in areas <math>< 12\text{m}^2</math>.
- 7 Allow 10 minutes before fixing the StrongBoard elements in place.
- 8 Tape all joints with the 140mm wide tape supplied. This completes the join.
- 9 Ensure that the tape does not overlap.
- 10 Once finished ensure that the surface is protected from dirt etc. and is not subject to pedestrian traffic. Cover if necessary.